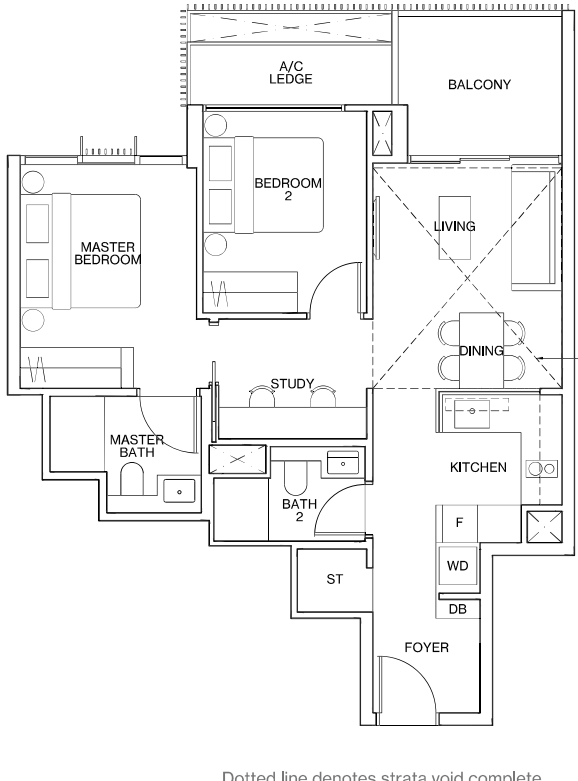


**TYPE B2-G**  
69m<sup>2</sup> / 743ft<sup>2</sup>

Inclusive of 7m<sup>2</sup> PES & 3m<sup>2</sup> AC Ledge  
 BLOCK 6 #01-12\*  
 BLOCK 18 #01-37, #01-44\*  
 BLOCK 20 #01-45, #01-52\*



**TYPE B2**  
69m<sup>2</sup> / 743ft<sup>2</sup>

Inclusive of 7m<sup>2</sup> Balcony & 3m<sup>2</sup> AC Ledge  
 BLOCK 6 #02-12\* to #11-12\*  
 BLOCK 12 #01-28\* to #11-28\*  
 BLOCK 18 #02-37 to #11-37  
 BLOCK 18 #02-44\* to #11-44\*  
 BLOCK 20 #02-45 to #11-45  
 BLOCK 20 #02-52\* to #11-52\*

**TYPE B2-P**  
81m<sup>2</sup> / 872ft<sup>2</sup>

Inclusive of 12m<sup>2</sup> Strata Void,  
 7m<sup>2</sup> Balcony & 3m<sup>2</sup> AC Ledge  
 BLOCK 6 #12-12\*  
 BLOCK 12 #12-28\*  
 BLOCK 18 #12-37, #12-44\*  
 BLOCK 20 #12-45, #12-52\*

Dotted line denotes strata void complete  
 with bulkhead at units #12-12\*, #12-28\*,  
 #12-37, #12-44\*, #12-45, #12-52\*

**LEGEND**

- F FRIDGE
- WD WASHER DRYER COMBO
- W WASHER
- D DRYER
- ST STORE
- DB DISTRIBUTION BOARD
- \* MIRRORED UNIT
- WN WINE CHILLER

