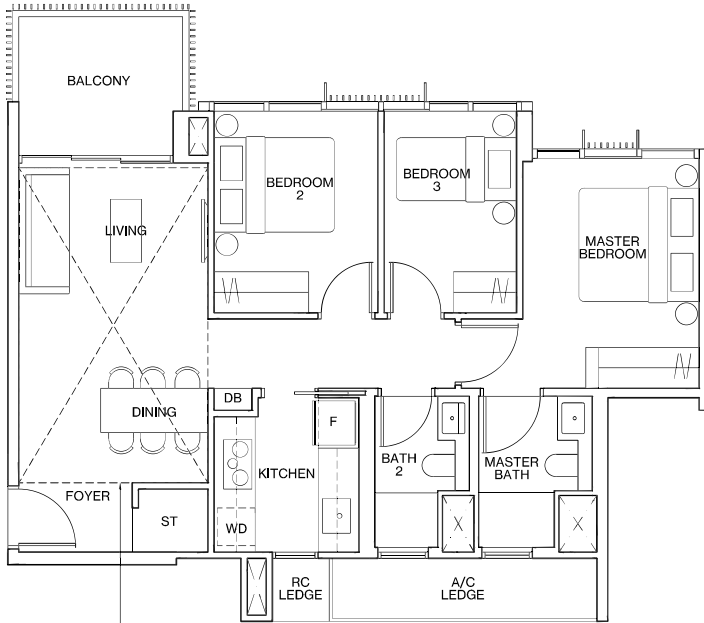


TYPE C1-G
80m² / 861ft²

Inclusive of 7m² PES & 5m² AC Ledge
 BLOCK 2 #01-02
 BLOCK 14 #01-29*, #01-30
 BLOCK 16 #01-33*, #01-36
 BLOCK 22 #01-53*, #01-54



TYPE C1
80m² / 861ft²

Inclusive of 7m² Balcony & 5m² AC Ledge
 BLOCK 2 #02-02 to #11-02
 BLOCK 14 #02-29* to #11-29*
 BLOCK 14 #02-30 to #11-30
 BLOCK 14 #01-32 to #11-32
 BLOCK 16 #02-33* to #11-33*
 BLOCK 16 #02-36 to #11-36
 BLOCK 22 #02-53* to #11-53*
 BLOCK 22 #02-54 to #11-54

TYPE C1-P
96m² / 1033ft²

Inclusive of 16m² Strata Void,
 7m² Balcony & 5m² AC Ledge
 BLOCK 2 #12-02
 BLOCK 14 #12-29*, #12-30, #12-32
 BLOCK 16 #12-33*, #12-36
 BLOCK 22 #12-53*, #12-54

Dotted line denotes strata void complete with bulkhead at units #12-02*, #12-29*, #12-30, #12-32*, #12-33*, #12-36, #12-53*, #12-54

LEGEND

- F FRIDGE
- WD WASHER DRYER COMBO
- W WASHER
- D DRYER
- ST STORE
- DB DISTRIBUTION BOARD
- * MIRRORED UNIT
- WN WINE CHILLER

