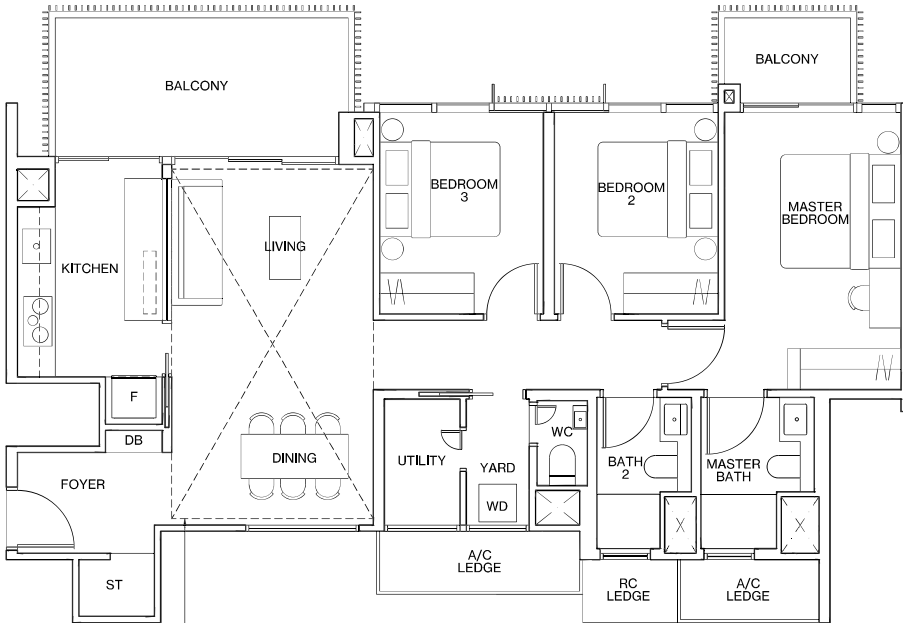


### TYPE C5-G

109m<sup>2</sup> / 1173ft<sup>2</sup>

Inclusive of 14m<sup>2</sup> PES & 6m<sup>2</sup> AC Ledge  
 BLOCK 2 #01-04  
 BLOCK 8 #01-13\*  
 BLOCK 16 #01-35\*  
 BLOCK 22 #01-56



### TYPE C5

109m<sup>2</sup> / 1173ft<sup>2</sup>

Inclusive of 14m<sup>2</sup> Balcony & 6m<sup>2</sup> AC Ledge  
 BLOCK 2 #02-04 to #11-04  
 BLOCK 8 #02-13\* to #11-13\*  
 BLOCK 10 #01-19\* to #11-19\*  
 BLOCK 14 #01-31\* to #11-31\*  
 BLOCK 16 #02-35\* to #11-35\*  
 BLOCK 22 #02-56 to #11-56

### TYPE C5-P

128m<sup>2</sup> / 1378ft<sup>2</sup>

Inclusive of 19m<sup>2</sup> Strata Void,  
 14m<sup>2</sup> Balcony & 6m<sup>2</sup> AC Ledge  
 BLOCK 2 #12-04  
 BLOCK 8 #12-13\*  
 BLOCK 10 #12-19\*  
 BLOCK 14 #12-31\*  
 BLOCK 16 #12-35\*  
 BLOCK 22 #12-56

Dotted line denotes strata void complete with bulkhead at units #12-04, #12-13\*, #12-19\*, #12-31\*, #12-35\*, #12-56

## LEGEND

- F FRIDGE
- WD WASHER DRYER COMBO
- W WASHER
- D DRYER
- ST STORE
- DB DISTRIBUTION BOARD
- \* MIRRORED UNIT
- WN WINE CHILLER

